

## Single File Restores With NETGEAR® ReadyRECOVER™



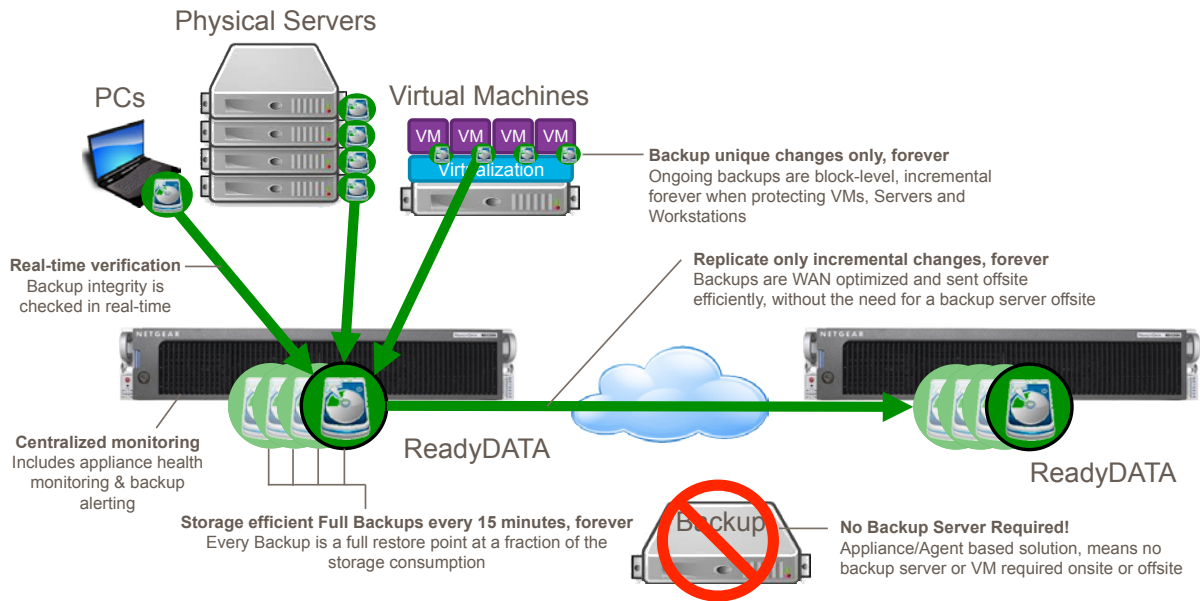
### ReadyRECOVER Introduction

ReadyRECOVER is a complete backup and recovery appliance designed for small and midsize businesses. Next-generation file system technology guarantees data integrity, efficient use of storage capacity and minimal impact to computing resources. With ReadyRECOVER, full backups are created every 15 minutes and can independently be used to quickly and reliably restore files, folders or complete systems to any platform, physical or virtual.

Traditional backup solutions create incremental “image chains” and require regular resource-draining full backup jobs to maintain data integrity and timely restore points. With ReadyRECOVER, each backup is a space-efficient recovery point that never requires image chain management or consolidation. In addition, each backup captures the entire target system, the Windows operating system, all services, all applications, all settings and all data for fast full system recovery.

ReadyRECOVER is a seamless integration of the ReadyDATA® unified storage platform from NETGEAR and ShadowProtect backup and recovery software from StorageCraft.

## ReadyRECOVER Restoration Options



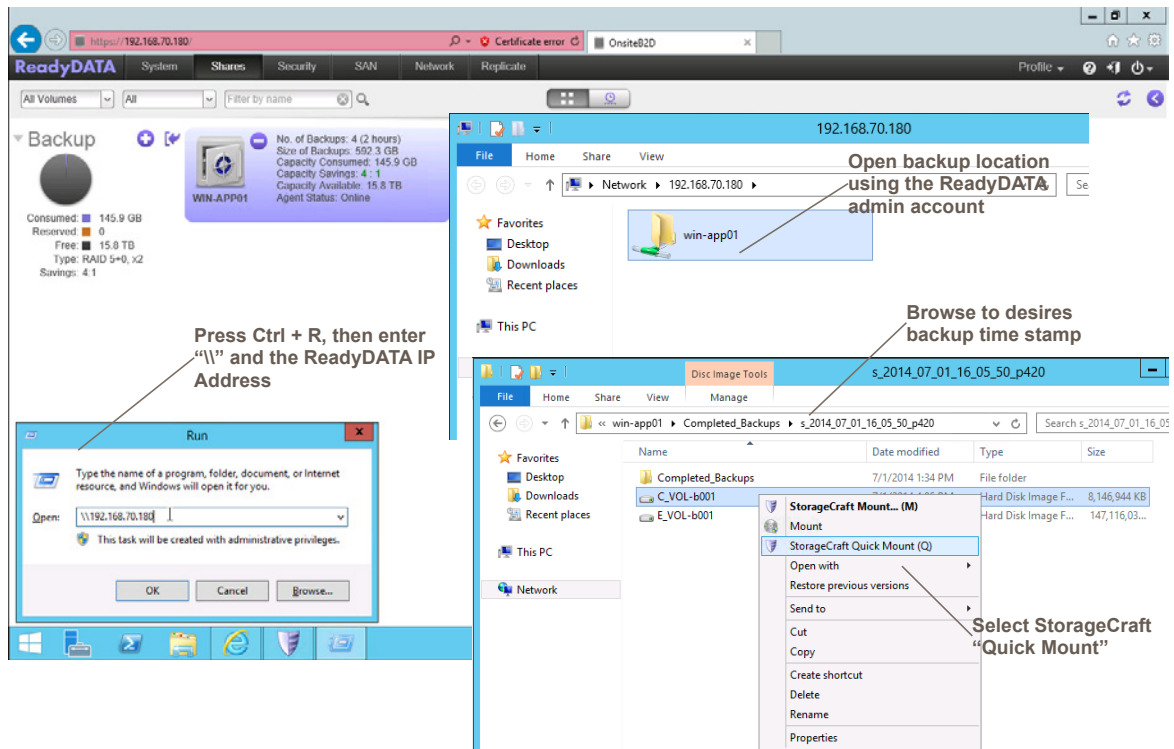
Restoration is the single most important part of any Backup and Disaster Recovery solution. For this reason, ReadyRECOVER focuses on real-world needs in a disaster situation, including:

1. **Single File Restore** – Any 15 minute backup can be mounted instantly and recovery of individual files. This capability means users don't have to wait to get important files or application data back in the event of corruption or human error.
2. **Hardware Independent Restore (HIR)** – Operating systems and applications can be restored onsite or offsite. More importantly, full systems can be restored to any hardware or virtualization platform (P2V, V2P, P2P, V2V) available at the time of disaster.

## Performing a Single File Restore

ReadyRECOVER allows you to recover entire operating system in case of a hardware failure, disaster, or data corruption. However, smaller recovery tasks are far more frequent. One of the most common recovery situations in a server environment is the need to restore a single file that may have been changed or deleted.

ReadyRECOVER provides a simple and reliable way to recover any file from any previous backup.

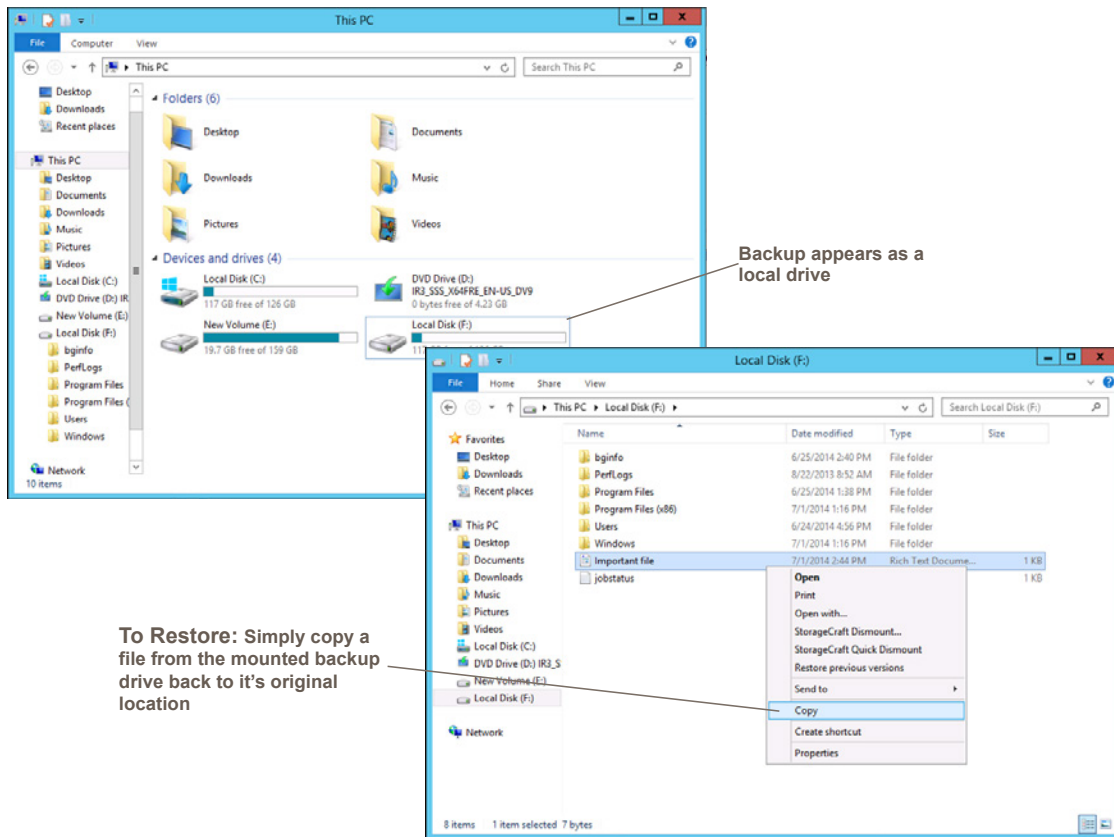


## Recovery Steps

1. Connect to the desktop of any system that has the ShadowProtect agent installed
2. Press the Ctrl + R to bring up the Windows Run menu
3. Enter the UNC path for the ReadyDATA that hosts the ReadyRECOVER backups ( \\{IP Address})
4. Open the backup share with the same name as your Backup Set
5. Browse through the "Completed\_Backups" folder to the time stamped folder which contains the desired backup
6. Right click on the backup image file of the volume that contains the file you wish to restore. Select "StorageCraft Quick Mount"



A copy of the whole volume that is being protected by ReadyRECOVER will be mounted as a local drive on the system. Simply browse through the newly mounted volume and copy any files that need to be restored back to their original location.



Congratulations! You have successfully recovered files. Detailed information about full system recovery, often called “bare metal recovery”, can be found in the ReadyRECOVER User Manual, which is available on the ReadyRECOVER product page at: <http://www.netgear.com/readyrecover>.

## Conclusion

Protecting business data is a top concern for IT administrators. With ReadyRECOVER, full backups are created every 15 minutes and can independently be used to quickly and reliably restore files, folders or complete systems to any platform, physical or virtual.

For additional assistance or product information, reach out to an authorized NETGEAR reseller (<http://www.netgear.com/business/buy/#tab-authorizedresellers>).